

Where Motion Matters



Make your machine faster, smarter, safer, and smaller with the motion control technology used by the world's leading OEMs.

Platinum
by **Elmo** 

See why we are different

Why Elmo

Innovation delivered

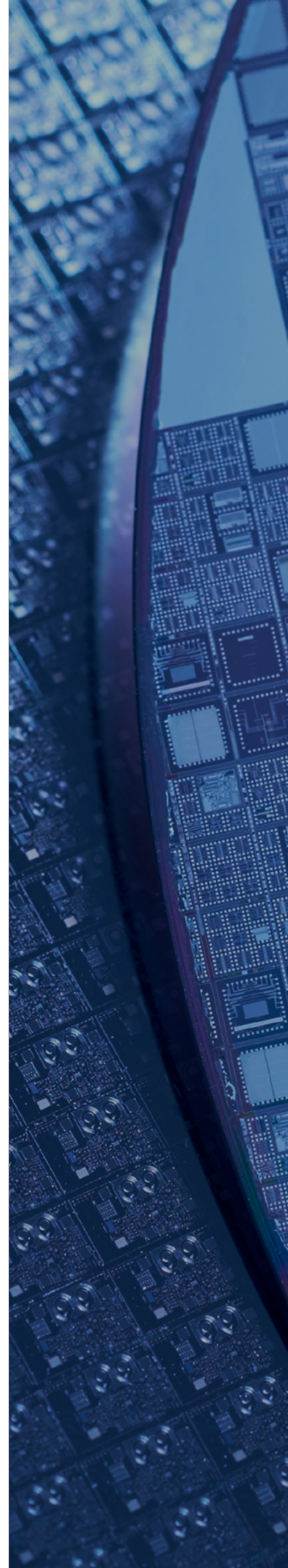
Our drives are in the field every day enabling the most technically demanding and mission critical applications, from semiconductors to space.

By engineers for engineers

Elmo exists because motion control is our passion. The only thing we're more passionate about is helping you get our drives into production.

The right drive for every application

With the largest catalog of compact, high performance servo drives and motion controllers, Elmo can drive any motor, with any feedback, on any bus.



Any Motion. Any Application

Elmo motion control is designed for all types of industries for a wide range of applications including:



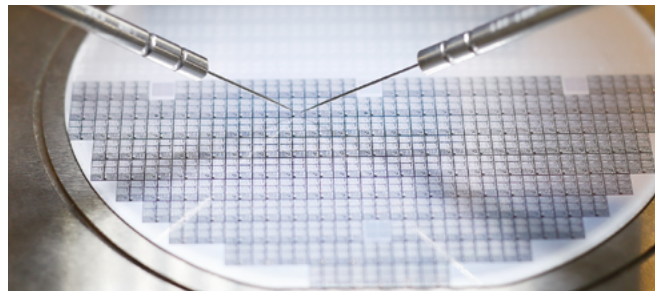
Life Sciences



AGV & Smart Warehouse



Industrial Automation



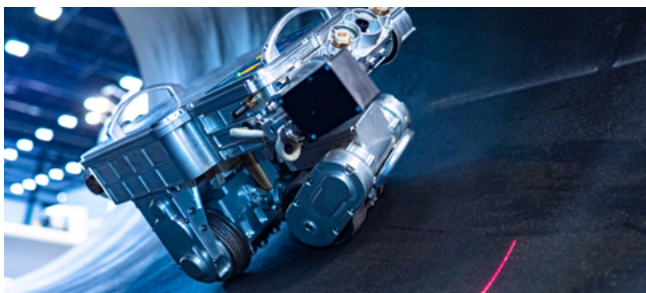
Semiconductor



Printing & Packaging



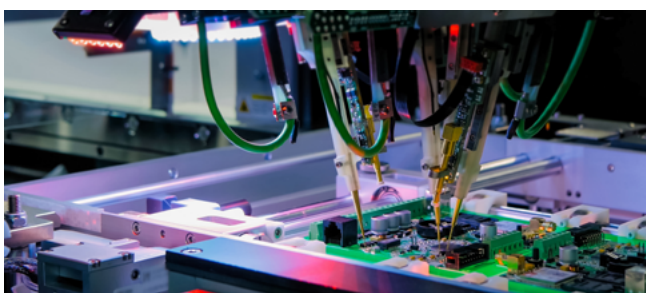
Extreme Environments



Robotics



Laser Cutting



Electronics

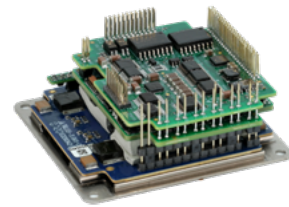
Platinum Line | Servo Drives

Platinum Bell

- > Up to 25A/100V & 9A/200V
- > Up to 2kW of Continuous Power
- > Brushless, Stepper or 2 X Voice-Coil



Platinum Solo Bell



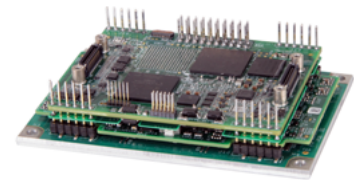
Platinum Bell

Platinum Quartet

- > 4 X 5000W Servo Drives 4 Axes
- > Motion Controller



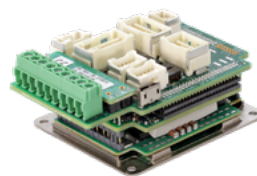
Platinum Solo Quartet



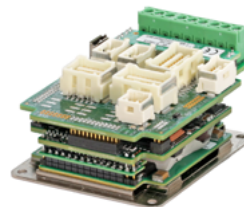
Platinum Quartet

Platinum Whistle

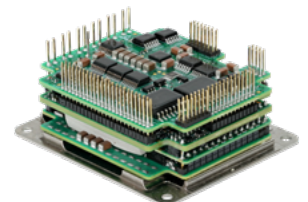
- > Up to 25A/100V & 9A/200V
- > Up to 2kW of Continuous Power



Platinum Solo Whistle



Platinum Solo Whistle with Safe I/O



Platinum Whistle

Platinum Twitter

- > Up to 80A/80V & 30A/200V
- > Up to 5.6kW of Continuous Power



Platinum Solo Twitter



Platinum Solo Twitter with Safe I/O



Platinum Twitter

Platinum Bassoon

- > Up to 10A/230VAC
- > Up to 3.25kW of Continuous Power
- > Brushless, DC Brush, Linear Motors or Voice-Coil



Platinum Solo Triple Twitter

- > Up to 270A/60V, 240A/80V, 210A/100V, 100A/200V
- > Up to 17kW of Continuous Power



Platinum Harmonica

- > Up to 50A/100V & 35A/200V
- > Up to 2kW of Continuous Power
- > Brushless, Stepper or 2 X Voice-Coil



Platinum String Quartet

- > 4x 16A/400V Servo Drives
- > Motion Controller



Platinum Cimbasso

- > Up to 50A/800V
- > Up to 5.6kW of Continuous Power



Platinum Line I Controller

Platinum Maestro

- > Up to 256 axes of motion
- > Advanced multi-axis control
- > Motion without programming
- > Enhanced field bus support



Platinum Maestro

Platinum Line I Software Tools

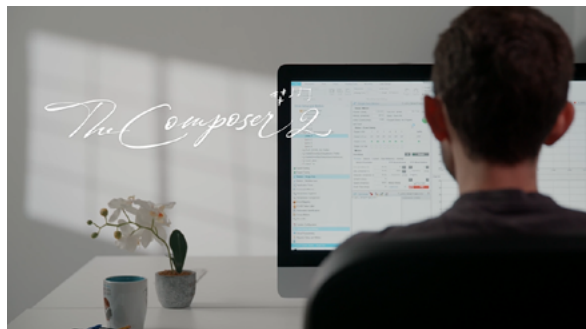
EASII (Elmo Application Studio)

- > A software tool that walks you through implementation.
- > Configures programs, maintains, and analyzes every feature and capability in Elmo's servo drives and motion controllers.
- > Designers can easily implement specific motion control needs.



COMPOSER2®

- > Unique software tool allowing engineers to execute their own designed software.
- > A powerful tool enabling machine designers to easily develop, test and implement their own control algorithms.
- > The composed code is cross-compiled and downloaded directly on the Platinum drives and motion controller for testing and executing in real-time environments.



Platinum Technology Highlights



ULTRA-LOW
LATENCY

Perfect machine
synchronization



Faster
development



Award winning
settling times

4000:1

Wide Dynamic Range

Optimally move
any load

35X30_{MM}

Miniature Modules

Mount
anywhere



Run your own
algorithms from
MATLAB

Fast and Soft
Switching
Technology



Smaller, more
powerfull
machines

256

Axes of Motion

Multi-axis
capabilities

Enhanced Servo Performance > Faster • More responsive • Higher resolutions • Additional algorithms for better control

Single Drive - Multi-Axis Control > Drive 2 from a single core, 3 & 4 axes on Platinum Quartet

Enhanced EtherCAT Networking > Faster cycling • Full synchronization of EtherCAT to position, velocity and current loop • Negligible jitter • Near-zero latency

Certified Safety, Functional Safety & FSoE > EN 61508 • EN 61800 • IEC 61784 up to SIL 3 CAT4 PLe over the network safety • Rich safety I/O • safety software

Rich Feedback Support > More feedback support • Up to 3 simultaneously (of which 2 may be absolute) • Safe sensors support • One cable technology

High Processing Power > Faster data handling • Larger memory • Enhanced processing • Real-time recorder

Flexible Control Design > Implement your own control design • Elmo cloud technology (SIL - Software in-the-loop)

A Culture of Reliability

+35

Years pioneering motion control innovation

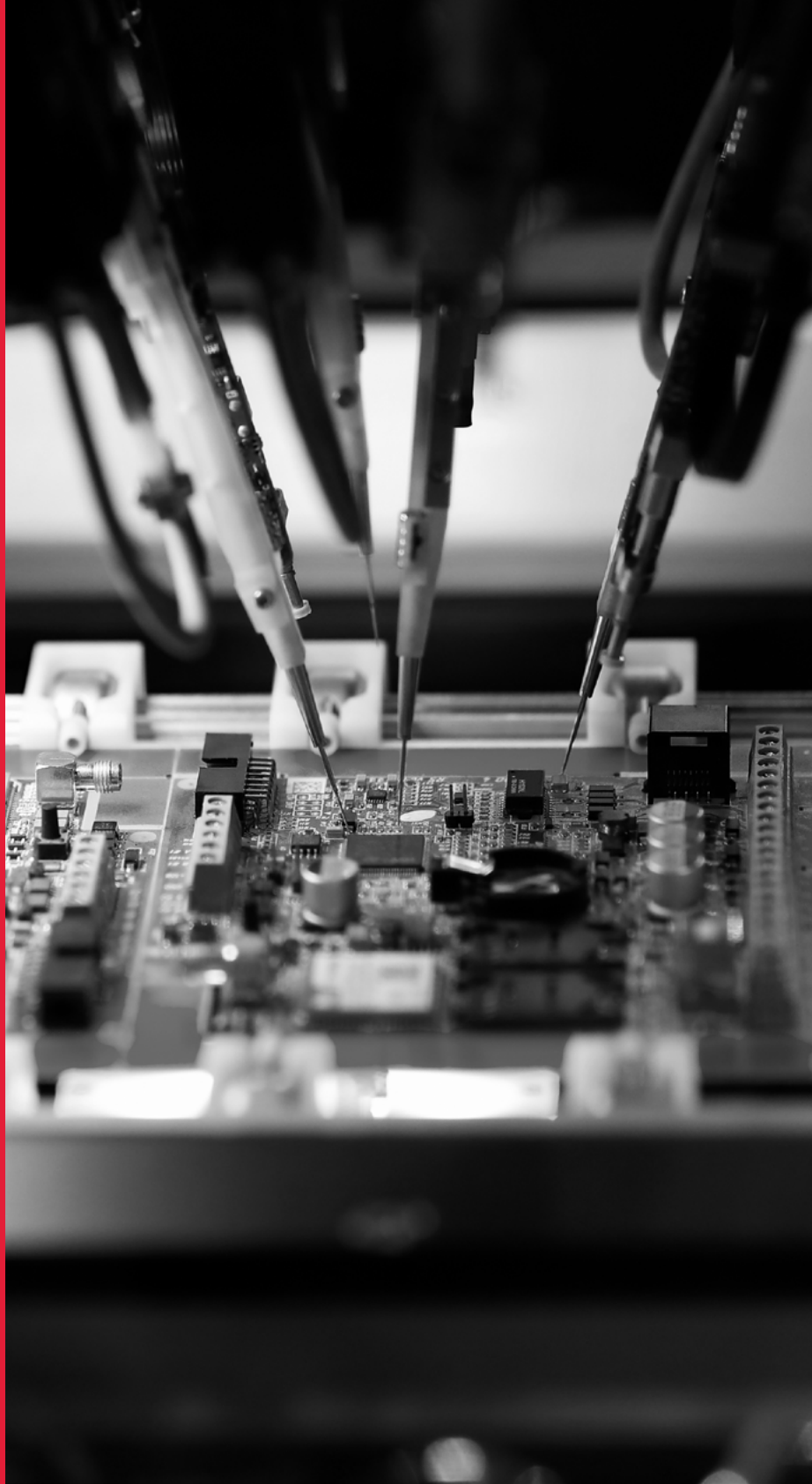
>2500

OEMs trust Elmo for their motion needs

>4.3M

Servo drives running 24/6 worldwide

Learn more at elmomc.com



EtherCAT
Conformance tested



Any Motor



Any Feedback

© Copyrights 2023 Elmo Motion Control Company.
The information contained herein is subjected to change without notice. Published on
September 2024. | www.elmomc.com

Elmo
Motion Control